

MITEL

## IP-DECT Solution

### Full-Featured, Cost Effective, Resilient Wireless Solution



The Mitel® IP-DECT solution provides high functionality wireless phones with easy access to telephony and messaging services. It is ideal for businesses requiring cost effective wireless voice services.

#### Workforce Mobility Improves Customer Service

Wireless enables businesses to extend the reach of their voice network to improve customer service. Users demand full feature transparency between the wired and wireless worlds – increasing flexibility in how people work without sacrificing customer responsiveness.

IP-DECT delivers high-quality wireless voice with stylish, easy to use, high functionality handsets over a proven, easy to deploy wireless infrastructure that is connected to the LAN.

#### A Powerful Scalable Solution

The IP-DECT solution can deliver from one to 512 handsets per installation via up to 256 LAN connected radio base stations delivering comprehensive, cost effective, voice radio coverage.

The handset design and system features deliver the look and functionality that users of mobile phones have come to expect. The design of the handset complements Mitel's desktop devices with a base station that blends into the business environment.

The overall aim of the Mitel feature (phone) resiliency is to keep resilient phones in an operational state providing each phone's primary or secondary controller is connected to the network. This is achieved via the Open Mobility Manager (OMM) and Portable Part (PP) resiliency offered. In order to manage a large network of Radio Fixed Parts (RFPs), Release 2 offers a Simple Network Management Protocol (SNMP) agent in each RFP.

#### Features

- Clear multi-line backlight display with Mitel telephony softkeys
- Personal and system phone book
- Easy user access to features through the familiar Mitel user interface
- Voice mail access with message waiting display
- Hands-free, headset working, ringing melodies and vibrate modes to suit the user's environment
- Long battery life - up to 20 hours talk time and 200 hours stand-by - from standard rechargeable batteries
- SOS key
- Silent desk and rack charging
- Indoor and outdoor base stations delivering extensive coverage



it's about **YOU**

## Deployment

- Mitel OpenPhone 27 handset
- Indoor, outdoor or combination radio base stations
- Maximum 512 handsets
- Maximum 256 radio base stations (connected via the IP LAN to the PBX)
- Emulates the Mitel Telephony User Interface (TUI)
- Web configuration interface and maintenance tool

## System Features Available with the Handsets

System Phone Book  
Personal Speed Calls

Hold/Retrieve

Call Forward (Busy, Always, No-Answer, Internal and External, Follow-me)

Call Park

Do Not Disturb

Group Paging/Meet Me Answer

Last Number Redial (external calls)

Auto-Answer

Transfer/Swap

Callback and Callback Messaging (inc. voicemail)

Call Pickup

Override

Trunk Flash

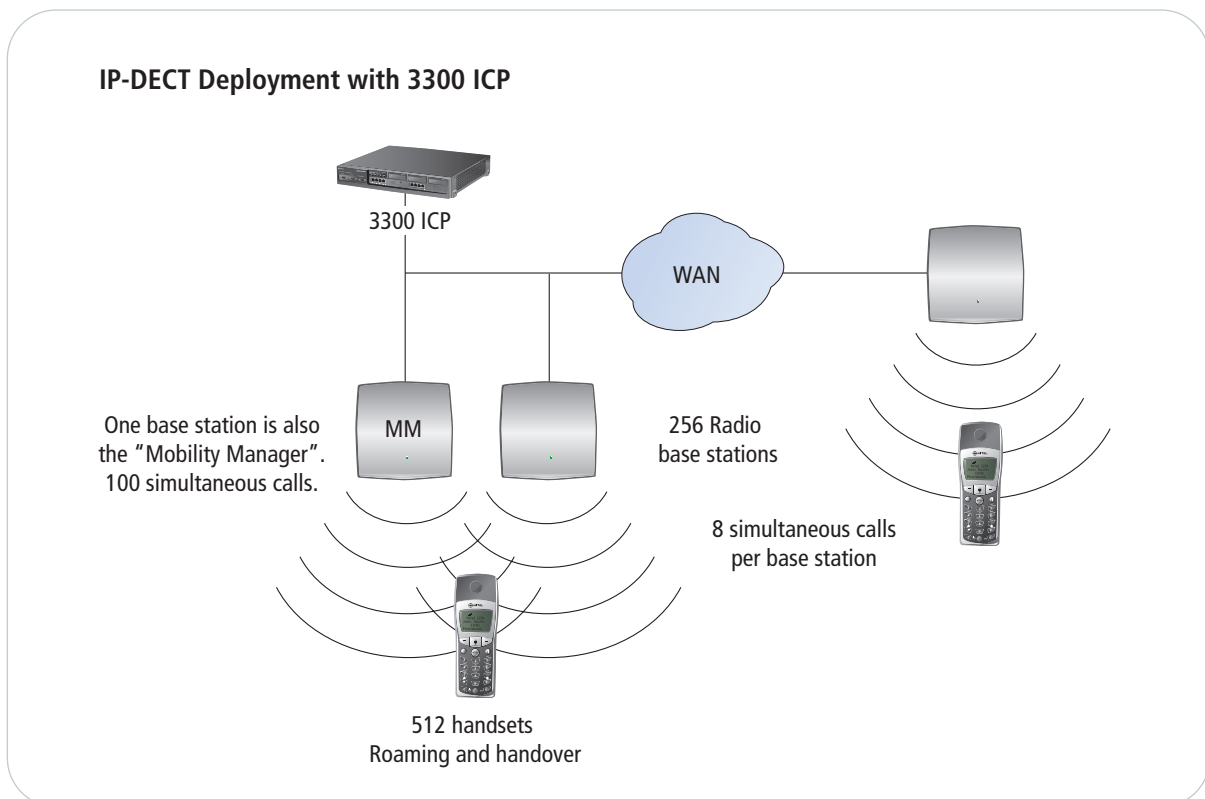
Saved Number Redial

Account Codes

Conference

Camp-On

Reminder



Note: A site survey is always recommended as part of wireless network provisioning

## Wireless Phone Specification

Mitel OpenPhone 27	
<b>Display (LCD)</b>	4 lines of 16 characters 3 line text, 1 line soft keys (upper and lower case, 96 x 60 pixels)
Display Backlight	Orange (also key pad)
Status indicators	Ringer off, signal strength, on/off hook, alarm, battery life, envelope, key lock
Time Display	✓
User Name & Number	✓
Network Subscription	✓
Display Contrast Adjustment	✓
<b>Key Pad</b>	12 "digit" keypad plus - 3 soft keys, on/off hook, loud-speaker, i-key, "C" and "R (also SOS)" key
Key Lock (manual & auto)	✓
Key Click	✓
SOS Key (idle mode)	✓
<b>Personal phone book</b>	100 entries, dial from address book, quick key assignment
<b>Features</b>	
Ringing "melodies"	30
Single and Continuous Ring	✓
Loud Speaker (hands-free & ringer)	✓
Speaker / Earpiece Volume Adjustment	✓
Ringer Volume Adjustment	✓
Vibrate Mode	✓
Alarm/Reminder	✓
Microphone Mute	✓
Headset port (2.5mm)	✓
Auto-answer	✓
<b>Languages</b> (English is default)	English, French, German, Italian, Spanish, Dutch, Portuguese
<b>Physical</b>	
Integrated Antenna	✓
Size (approx.)	146mm x 53mm x 28mm
Weight	138 grams (inc. batteries)
<b>Powering</b>	
Batteries	3 of AAA 750 mAh NiMH Input: 220-240V 50 Hz 45mA. Output: 7.5V DC 150mA
Low Battery Warning	✓
Silent Charging	✓
Desk Charger	Plug Top Power Adaptor (Euro or UK) Up to - 20 hours talk time, 200 hours stand-by, 5 - 6 hours recharge time
Rack Charger	✓
<b>Performance</b>	
Frequency & Transmission Level	1.88 – 1.9 GHz. up to 10 mW
Receive Sensitivity	>-93 dBm (typically -94 dBm)
Range (Max.)	Up to 300m outdoors and up to 50m indoors
Coverage Warning	✓
GAP Compatible (EN 300 444)	✓
Site Survey Mode	✓
Temperature	Storage: -40°C to +60°C Operation: -10°C to +40°C * Recharging: 0°C to +40°C Relative Humidity: 15% to 35% * at -10°C there is no guarantee of LCD functions or full battery capacity
MTBF	20 years

## Radio Base Station Specification

	Indoor (RFP 31)	Outdoor (RFP 33)
<b>Physical</b>		
Installation	Wall	Wall or Mast
Size (mm)	203 x 198 x 38	237 x 240 x 80
Weight (g)	300	982
LEDs	1 (3 colour)	None
Antennae	Internal (2 Diversity)	External (2 TNC connectors) Dipole or Directional
Power Options	802.3af Power over LAN (spare or signal pair) or Plug Top Adaptor (Euro or UK). Input: 220-250V 50 Hz 86mA. Output: 38 DC 300mA	802.3af Power over LAN (spare or signal pair)
<b>Performance</b>		
DECT	Full Slot Technology - 24 time slots, 8 simultaneous calls	
Frequency and Transmission Level	1.88 – 1.9 GHz at up to 10 mW	
Range (Max.)	Up to 300m outdoors and up to 50m indoors	
Temperature Range	Storage: -40°C to +70°C Operation: -10°C to +40°C Relative Humidity 15% to 35%	Storage: -40°C to +70°C Operation: -25°C to +55°C Relative Humidity 15% to 100%
Special Characteristics	n/a	Ingress Protection Rating IP55
MTBF	20 years	
<b>LAN</b>		
Compression	G.711 and G.729ab (10, 20 and 30 ms packet sizes)	
Ethernet	1 port - 10/100 Mbit/s IEEE 802.3 MAC (half/full duplex)	
Voice Traffic	RTP over UDP	
Signalling	MiNet over TCP	
<b>SW Features</b>	Automatic remote load/update via Netboot (DHCP/BOOTP/TFTP)	

## Regulatory Standards

99/5/EC (R&TTE)	
EN 301 407 V1.4.1 (3/2001)	Radio Equipment and Systems (RES) – Digital Enhanced Cordless Telecommunication (DECT) – general terminal attachment requirements
EN 301 489-1 (8/2000)	Electro Magnetic Compatibility for radio equipment and services Part 1 – common technical requirements
EN 301 489-6 (9/2000)	Part 6 - specific conditions for DECT
EN 60950 (12/2001)	Safety of IT equipment
EN 50360 (2001)	Production standard - compliance of mobile phones – basic restrictions relating to human exposure (300MHz bis 3 GHz)
EN50385 (2002)	Production standard - compliance of radio base stations and fixed terminals – basic restrictions relating to human exposure (110MHz bis 40 GHz)

If planning installation outside the European Union the regulatory position must be checked with Mitel - specific local Regulatory Approvals may be required.

## System Requirements

Mitel 3300 Integrated Communications Platform (ICP), Release 5.1 or later

<b>North America</b> (613) 592 2122 1 800 648 3579	<b>Latin America</b> (613) 592 2122 1 800 648 3579	<b>UK</b> Tel: +44 (0)1291 430000 Fax: +44 (0)1291 430400	<b>France</b> Tel: +33 (0)1 61 37 00 90 Fax: +33 (0)1 61 37 00 99
<b>Benelux</b> Tel: +31 (0)30 85 00 030 Fax: +31 (0)30 85 00 031	<b>Italy</b> Tel: +39 02 2130231 Fax: +39 02 21302333	<b>Germany, Switzerland, Austria</b> Tel: +49 (0)211 5206480 Fax: +49 (0)211 52064899	<b>Portugal and Spain</b> Tel: +34 91 350 66 33 Fax: +34 91 350 70 14
<b>Middle East</b> Tel: +971 4 3916721 Fax: +971 4 3915288	<b>South Africa</b> Tel: +27 82 559 8688 Fax: +27 11 784 6916	<b>Asia-Pacific</b> Tel: +852 2508 9780 Fax: +852 2508 9232	

www.mitel.com



THIS DOCUMENT IS PROVIDED TO YOU FOR INFORMATIONAL PURPOSES ONLY. The information furnished in this document, believed by Mitel to be accurate as of the date of its publication, is subject to change without notice. Mitel assumes no responsibility for any errors or omissions in this document and shall have no obligation to you as a result of having made this document available to you or based upon the information it contains.

M MITEL (design) is a registered trademark of Mitel Networks Corporation. All other products and services are the registered trademarks of their respective holders.

© Copyright 2005, Mitel Networks Corporation. All Rights Reserved.

GD 9443 PN 51008101RB-EN